

**WILSON INDUSTRIES PTY. LTD.  
WARRANTY  
MPE/MPS/AP/TH series stainless steel water heater and storage units**

Wilson Industries Pty. Ltd. warrants Stainless Steel MPE/MPS/AP/TH water heater/storage vessels against faulty workmanship and materials for 10 years from the date of original purchase. Warranty details are outlined below. The warranty applies provided that in our opinion the unit has not been subject to any accident, alteration, incorrect installation, excessive water pressure, abuse, misuse, flood, fire, act of God or damage as a result of transportation or storage. Electrical components and relief valves carry the respective manufacturers warranty, up to 12 months. This warranty shall not apply to such Unit or part thereof, which has been the subject of fixed temperature settings in excess of 80°C, or if any repairs have been made by any person not approved by Wilson Industries Pty. Ltd..

The following items are specifically excluded from the terms of this warranty where damage and or faulty operation has been caused by,

1. Transport or storage.
2. Incorrect installation, faulty valve, connection to incorrect water supply. Pressure limiting and pressure relief valves must be fitted to inlet as per installation manual and warranty booklet.
3. Accumulation of sludge, sediments or foreign particles in the water supply, generally from untreated water supply such as dams, bores, rivers, artesian water sources, etc.
4. Excessive water pressure.
5. Water quality exceeding the following parameters, pH 6.5 – 9.5, chloride 200mg/l, total dissolved solids 600mg/l, magnesium 10mg/l, total hardness 220mg/l.
6. Implosion of cylinder due to vacuum.
7. Failure created by microbial (mic) corrosion/attack is not covered.

Notwithstanding anything contained herein, the MPE/MPS Units shall continue to be subject to any implied warranty as provided by the Australian Consumer Law if and to the extent that the Act is applicable and prevents the exclusion, restriction or modification of that warranty.

Wilson Industries Pty. Ltd. will,

**For the period up to and including the 5th year after the date of original purchase,**

Repair or replace defective components or, at the discretion of Wilson Industries Pty. Ltd. provide a replacement unit or parts, including the cost of labour to repair the unit.

**For the 6th year after the date of original purchase,**

The same warranty will apply except that the owner will be charged 30% of such repair work and or cost of replacement parts.

**For the 7th year after the date of original purchase,**

The same warranty will apply except that the owner will be charged 40% of such repair work and or cost of replacement parts.

**For the 8th year after the date of original purchase,**

The same warranty will apply except that the owner will be charged 60% of such repair work and or cost of replacement parts.

**For the 9th year after the date of original purchase,**

The same warranty will apply except that the owner will be charged 80% of such repair work and or cost of replacement parts.

**For the 10th year after the date of original purchase,**

The same warranty will apply except that the owner will be charged 90% of such repair work and or cost of replacement parts.

The above conditions, with regard to labour, apply within State Capital City metropolitan areas, as determined by Wilson Industries Pty. Ltd.. Outside these areas, the unit or parts are to be returned, unless otherwise arranged, to Wilson Industries Pty. Ltd. or a service agent nominated by Wilson Industries Pty. Ltd.. All freight and insurance charges (both ways) are the responsibility of the owner. When making a warranty claim, it is the responsibility of the owner to provide proof of original purchase and the date of purchase. The unit must be installed by appropriately qualified trades people in accordance with relevant standards and local statutory authorities regulations. Responsibility for repairs to the unit cannot be accepted unless authorization to carry out repairs has been previously given by Wilson Industries Pty. Ltd.. Where a warranty claim has been made and it is found that the fault is not within the unit, all costs will be charged to the owner. The warranty does not extend to any consequential loss or damage, which may be a result of the operation or non-operation of this unit, subject to any statutory warranty to the contrary.

Any unit or part replaced under warranty is not covered by a further full warranty but is covered for the remaining period of the existing warranty.

Our goods come with guarantees that cannot be excluded under the Australian Consumer Law. You are entitled to a replacement or refund for a major failure and for compensation for any other reasonably foreseeable loss or damage. You are also entitled to have the goods repaired or replaced if the goods fail to be of acceptable quality and the failure does not amount to a major failure.

**Wilson Industries Pty Ltd**  
59 Barry St, Bayswater, Vic. 3153  
Phone (03) 9751 7788  
Freecall 1800 30 20 50 A.B.N. 56 154 374  
240  
[www.wilsonhotwater.com.au](http://www.wilsonhotwater.com.au)



**wilson**  
HOT WATER



User manual and warranty  
**MPE/MPS/AP/TH SERIES WATER  
HEATERS and STORAGE VESSELS**

## Congratulations!

On your purchase of a Wilson Industries Stainless steel heater/storage unit. Your unit combines a number of key quality features:

- **316 stainless steel cylinder**
- **pickling and passivation after welding, giving a cleaner storage tank with greater corrosion resistance**
- **polyurethane foam insulation for superior heat loss performance**
- **10 year warranty. Refer back page for warranty conditions.**

## 1.0 WARNINGS

**THIS APPLIANCE MAY DELIVER WATER AT HIGH TEMPERATURE. REFER TO THE PLUMBING CODE OF AUSTRALIA (PCA), LOCAL REQUIREMENTS AND INSTALLATION INSTRUCTIONS TO DETERMINE IF ADDITIONAL DELIVERY TEMPERATURE CONTROL IS REQUIRED.**

**FOR CONTINUED SAFETY OF THIS APPLIANCE IT MUST BE INSTALLED, OPERATED AND MAINTAINED IN ACCORDANCE WITH THE MANUFACTURER'S INSTRUCTIONS.**

**INSTALLATION SHALL CONFORM WITH THE PLUMBING CODE OF AUSTRALIA (PCA).**

This appliance is not intended for use by persons (including children) with reduced physical, sensory or mental capabilities, or lack of experience and knowledge, unless they have been given supervision or instruction concerning use of the appliance by a person responsible for their safety.

Children should be supervised to ensure that they do not play with the appliance.

## SCALDING

This unit can produce water hot enough to burn skin. Delivery temperatures must be controlled as per AS/NZS 3500.4

## SAFETY

Use only qualified trades people or Wilson Industries nominated service technicians for installation and repairs. Installations must have electrical and plumbing compliance certificates.

## TEMPERATURE SETTING

Temperature to be set by qualified trades people during installation. Maximum temperature is 80°C. It should not be set below 60°C.

## OVER TEMPERATURE / OVER PRESSURE PROTECTION

This unit is fitted with over temperature electrical cutout thermostat and a pressure and temperature relief valve. This equipment must not be interfered with and must only be serviced by a suitably qualified technician. See section on Pressure and Temperature relief valve.

**DANGER** The operation of the over temperature electrical cutout thermostat indicates a possibly dangerous situation. **DO NOT** reset cutout thermostat until the water heater is serviced by a qualified person.

## 2.0 INSTALLATION

### 2.1 PLUMBING INSTALLATION

This unit is designed for permanent connection to mains only. No hose set connection allowed. Unit should be installed on a level concrete base, away from pooling water. Unit should be fixed to support structure using rivets or screws, not adhesives. All fasteners should be waterproofed as required.

Unit should be installed on a level concrete base, away from pooling water. The pressure and temperature relief valve must be mounted in the marked socket and its outlet vented to atmosphere, piped continuously downward in a frost free environment. The unit must be installed by a licensed tradesman in accordance with AS3500.4 and the requirements of the appropriate regulatory authority. For example a safe tray may be required for indoor installations. The inlet pressure should not exceed 750kPa. A pressure reducing valve must be fitted to maintain the correct inlet pressure. The elements must not be energised without the unit filled with water. It is recommended that an expansion relief valve is fitted to reduce pressure buildup during the heating cycle and save heating energy. All attached valves and pipes should be lagged to save energy.

**WARNING: THE VALVE OR DRAIN VALVE OUTLET PIPE MUST NOT BE SEALED OR BLOCKED.**

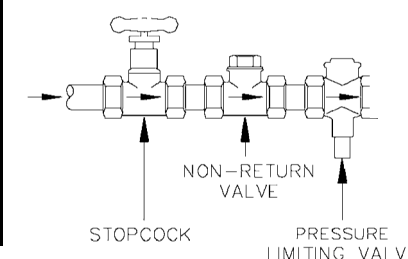
**WARNING: VACUUM WILL IMplode TANK.**

### DRAINING THE UNIT

The unit should be isolated at the stop cock and also electrically. Depressurise the unit with the pressure and temperature relief valve by gently lifting and hold the valve lever open while draining the unit. Remove inlet pipe fitting to drain water, again gently lifting the lever to break the vacuum. **Failure to hold the pressure and temperature relief valve open during draining may result in a vacuum implosion, which will void the warranty.**

MPE/MPS/AP/TH SERIES	
Hot water delivery:	160/250/315 LITRE
Volts:	240V~
PRESSURE SETTINGS	
Pressure and temperature Relief Valve	850
Working pressure of water heater	750
Max. inlet pressure	750
Pressure reducing valve	500

### RECOMMENDED INLET VALVES



### 2.2 ELECTRICAL INSTALLATION

The unit must be installed by a licenced tradesman in accordance with AS/NZS3000. Means for disconnection from the supply mains having a contact separation in all poles that provide full disconnection under over-voltage category III conditions must be incorporated in the fixed wiring in accordance with the wiring rules.

### 3.0 TEMPERATURE CONTROL FOR SANITARY APPLIANCES

When hot water is supplied to sanitary fixtures primarily used for the purposes of personal hygiene additional temperature control devices will be required.

### 4.0 REGULAR MAINTENANCE PRESSURE AND TEMPERATURE RELIEF VALVE

**DANGER** This valve must be mounted in the marked socket and its outlet vented to atmosphere, piped continuously downward in a frost free environment. It may sometimes trickle water during the heating cycle especially when heating from cold if no expansion relief valve has been fitted. It should not trickle water continuously. The safe operation of this valve prevents the water heater exploding if there is a serious fault. The valve should be vented every 6 months to remove any deposits and verify the valve is not blocked. It is important to **slowly and gently** lift and release the lever to avoid damaging the valve. Water should flow out. If the valve is always leaking water, or does not flow when the lever is pulled, it must be repaired by a licensed tradesman. The valve should be replaced every 5 years or sooner in hard water areas.